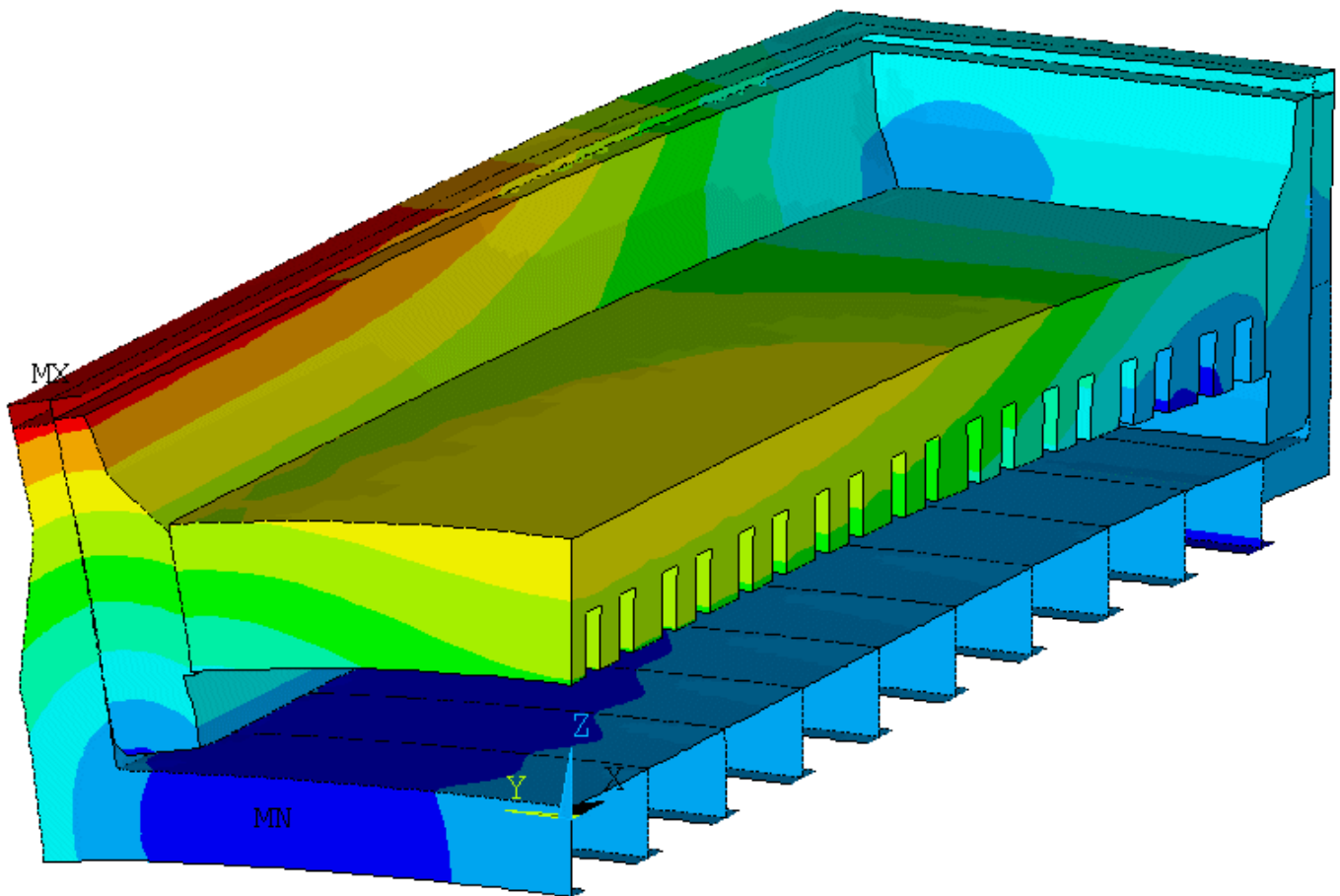


ANSYS® BASED 3D THERMO-MECHANICAL POTSHELL MODELS



GENISIM

ANSYS® THERMO-MECHANICAL POTSHELL MODELS

Price list

- **3D FULL CELL QUARTER THERMO-ELECTRIC**
\$25,000 US (including delivery of separate half anode, cathode side slice, anode panel quarter and cathode quarter models)
- **3D EMPTY SHELL QUARTER**
(Requires a solution of the 3D full cell quarter thermo-electric and either of the almost empty shell or the half empty shell thermo mechanical models)
- **3D ALMOST EMPTY SHELL QUARTER**
(Requires a solution of the 3D full cell quarter thermo-electric model)
- **3D HALF EMPTY SHELL QUARTER**
\$10,000 US for all three types of thermo-mechanical potshell models (Requires a solution of the 3D full cell quarter thermo-electric model)

For all models, the price includes the construction of a fully parametric geometry of your own cell design and the APDL source code of all the required macros (ANSYS® APDL programs that perform tasks like converging the sodium expansion load).

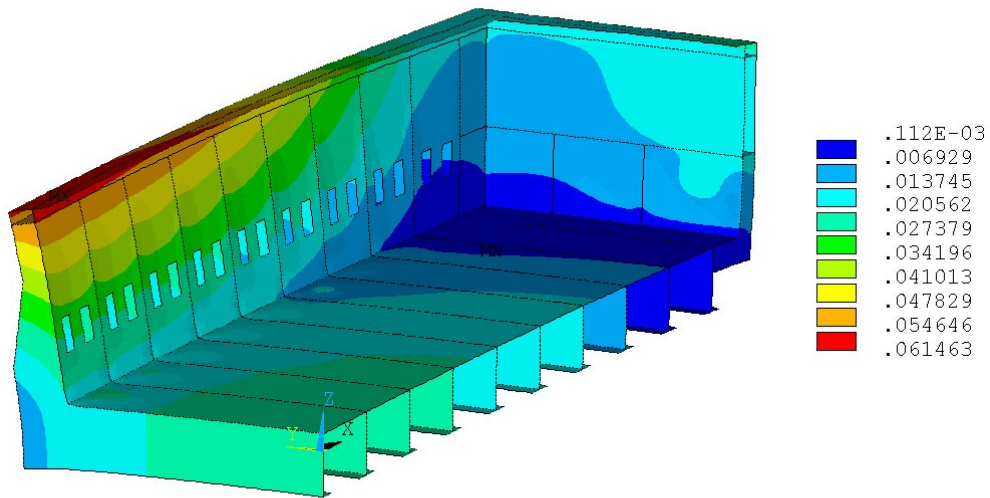
\$100 US per hour for support and model validation

For more information, contact:

Dr. Marc Dupuis P. Eng., G niSim Inc.
Phone : (418) 548-1541, Fax : (418) 548-4215
E-mail : marc.dupuis@genisim.com
Internet: <http://www.genisim.com>

ANSYS® THERMO-MECHANICAL POTSHELL MODELS

3D EMPTY SHELL QUARTER



3D ALMOST EMPTY SHELL QUARTER

