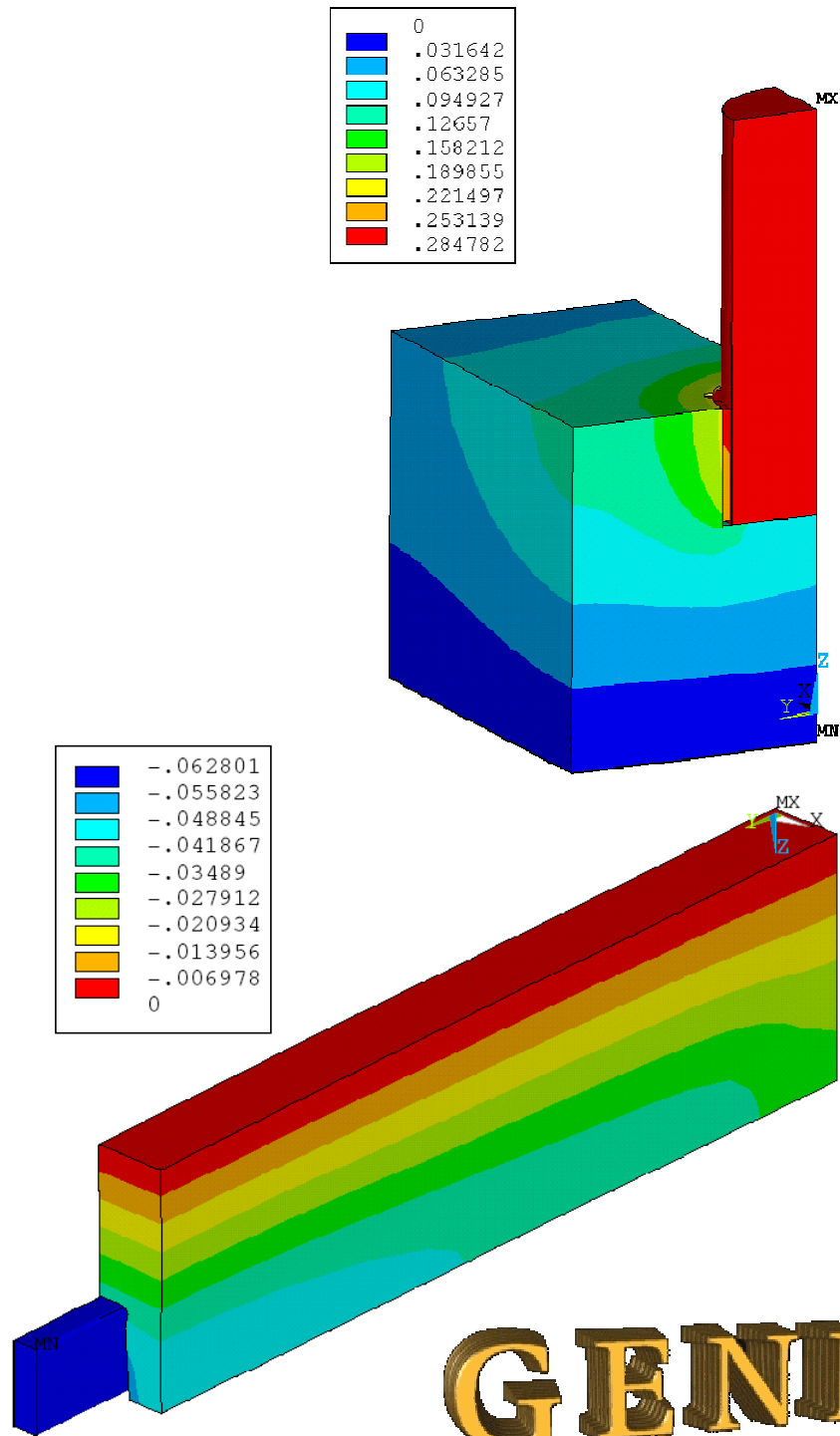


# ANSYS® BASED 3D THERMO-ELECTRO-MECHANICAL ANODE AND CATHODE MODELS



**GENISIM**

# **ANSYS<sup>®</sup> THERMO-ELECTRO-MECHANICAL ANODE AND CATHODE MODELS Price list**

- QUARTER STUD ANODE MODEL
- HALF BAR CATHODE MODEL

\$10,000 US for the two types of thermo-electro-mechanical models

For all models, the price includes the construction of a fully parametric geometry of your own cell design and the APDL source code of all the required macros (ANSYS<sup>®</sup> APDL programs that perform tasks like converging the fully coupled problem).

\$100 US per hour for support and model validation

For more information, contact:

Dr. Marc Dupuis P. Eng., GéniSim Inc.  
Phone : (418) 548-1541, Fax : (418) 548-4215  
E-mail : marc.dupuis@genisim.com  
Internet: <http://www.genisim.com>